

CALIFORNIA STATE UNIVERSITY
LONG BEACH
Booklet 2023



BY THE

WHY THE BEACH?

California State University, Long Beach (CSULB) is a diverse, student centered and globally engaged public university. Located by the ocean, the city of Long Beach is home to beautiful beaches and attractions that enrich your experience. By choosing to attend CSULB, you will receive highly-valued educational opportunities through superior teaching, research, creative activity and service.



DIVERSE

- CSULB is a national leader in the number of degrees awarded to Hispanic students according to *Hispanic Outlook on Education*.
- CSULB placed 4th in awarding bachelor degrees to minority students in all combined disciplines.
- CSULB's annual Pow Wow, an American Indian social celebration, is the largest spring event of its kind in Southern California.

AFFORDABLE

- CSULB has recently ranked 1st for "Best Bang for the Buck" according to *Washington Monthly*.
- In a 2022 study by Georgetown University's Center on Education and the Workforce, CSULB ranked in the top 10% of universities that provide the most return on investment.
- Payment plan contracts are offered to assist students with paying tuition and fees.

HIGH QUALITY

- CSULB has been ranked the 2nd master's-level university in the nation by *Washington Monthly*.
- CSULB was one of the nation's top "Best in the West" public universities by *The Princeton Review's "Best Colleges: Region by Region."*
- CSULB ranked 8th nationally in undergraduate applications by *U.S. News & World Report*.

SUSTAINABLE

- CSULB has the largest solar power system in the CSU system and is committed to reaching climate neutrality by 2030.
- Our Sustainable Transportation Program promotes campus shuttles, buses, carpooling and bikes.
- Water conservation projects including drought tolerant plantings and drip irrigation have been implemented on campus.



3rd

PROMOTING SOCIAL MOBILITY

U.S. News & World Report

90+

COUNTRIES REPRESENTED IN STUDENT BODY

300+

CLUBS & ORGANIZATIONS

26:1

STUDENT FACULTY RATIO

GET INVOLVED ON CAMPUS

Participating in on-campus activities allows students to create friendships, memorable experiences and a community. In addition to the many clubs and organizations, there are also volunteer and work opportunities available. Below are a few examples to explore.



ASI is a student-run organization that enhances students' social and educational experience.



Students can volunteer with Project OCEAN's mission of increasing awareness about mental health issues.



Students can participate in friendly competitions with other universities.

NO BARRIERS TO YOUR SUCCESS

CSULB works endlessly so students can meet and retain their educational goals, remove barriers to accessing education and create an engaging community.



Scan the QR code for more information about student support programs.



The **Career Development Center** prepares students for professional success by hosting resume writing workshops, and both mock and on-campus interviews.



The **Dream Success Center** provides services, resources and support to undocumented students on our campus. Their mission is to empower scholars in their pursuit of higher education and foster a supportive campus community.



The **Women's & Gender Equity Center** is a safe environment that offers services, support and resources such as a Not Alone @ The Beach – a sexual assault victim's advocate – and the Women and Careers Conference.



The **Men's Success Initiative** supports young men of color in their academic endeavors by improving access, retention and graduation rates, and providing academic support, professional development and mentoring.



The **Office of Multicultural Affairs** implements educational, cultural and social learning environments that strive to enrich diverse views of students from various backgrounds, cultures and beliefs.



EOP is dedicated to serving first-generation, historically under represented students by providing access and equity to higher education. They offer academic and financial aid counseling, tutoring, orientation, and career and graduate school exploration.



Counseling & Psychological Services is available for students who need assistance overcoming personal challenges.



The **ASI Beach Pantry**, stocked with non-perishable items such as canned beans, soups and juice, is a resource for students unable to cover the combined costs of study and meals.



Beach Transfer Transition Center helps identify processes, procedures and institutional practices that will have a positive effect on the student success of CSULB transfer students.



Veterans Services help service members, veterans and eligible dependents access the educational benefits they earned by serving in the armed forces of the United States.





BEACH PRIDE

Get involved by joining one of our sports teams or by cheering them on in the stands.

Through CSULB Athletics, students have access to women's and men's award-winning Division I teams and competitive athletic programs.

NCAA Division I Teams

Baseball	Golf (m/w)	Tennis (w)
Basketball (m/w)	Indoor Track & Field (m/w)	Track & Field (m/w)
Beach Volleyball (w)	Soccer (w)	Volleyball (m/w)
Cross Country (m/w)	Softball	Water Polo (m/w)

19

NCAA DIVISION 1
TEAMS

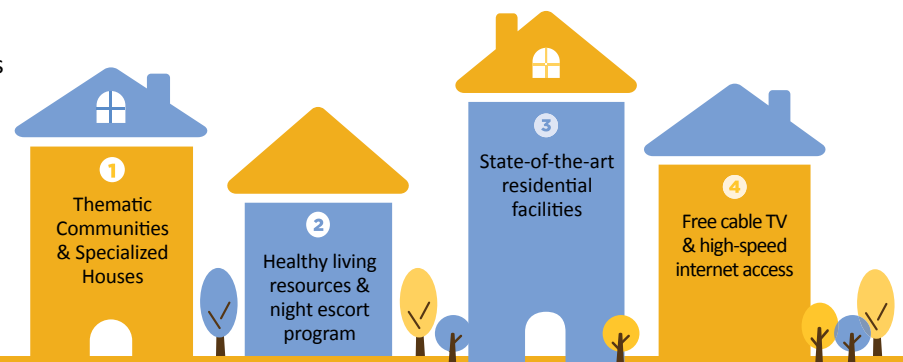
12+

INTRAMURAL
LEAGUES

MAKE YOURSELF AT HOME

Get involved with opportunities beyond the classroom.

- **Social events** such as Poet's Lounge, Beach Clean Up and Outdoor Movie Series provide students with a fun atmosphere, while enhancing their educational experience.
- **Week of Welcome** is a bi-annual event where hundreds of student organizations, clubs and departments are showcased.
- **The University Student Union**, the heart of the campus, has food services, lounging areas, recreational activities and study areas—including a 24 hour After Hours Study Center.
- Students have access to affordable quality health services and education programs through **Student Health Services**.
- **The Student Recreation & Wellness Center** is a hub for recreational activities, programs, and opportunities for intramural sports, fitness, and healthy living services. CSULB promotes a balanced lifestyle among students through health and fitness classes such as meditation, yoga and Zumba.
- CSULB is a **bike-friendly campus** and has transportation services such as buses and shuttles available for student use.
- **Living on campus** is convenient and provides opportunities to make friends and participate in campus activities. A new facility and two fully renovated buildings provide premium student housing accommodations.



APPLY TO THE BEACH

Apply online at [Cal State Apply](https://calstate.edu/apply) (calstate.edu/apply) by the deadline and pay the \$70 application fee. Fee waivers are available for qualified California residents. Some majors require an audition such as dance and music. For additional information, visit [CSULB Admissions](#).

It is recommended to work closely with your counselor or counseling office for assistance and support.

Application Period



First-time, first-year & transfer applicants for the Fall semester



Transfer applicants only for the Spring semester

First-Time, First-Year Applicants

California applicants must fulfill the following eligibility requirements:

- Complete the A–G College Preparatory Subject Requirements with a “C” or higher prior to high school graduation.
- Graduate from high school or complete your GED by the end of the spring term prior to fall enrollment.
- Have a minimum [CSULB Eligibility Index](#) to be considered.

Graduates of California high schools and other California residents must also:

- Have a 2.5 GPA or greater in college preparatory subjects.
- Meet the 3,200 minimum “CSULB Index” to be considered for a non-STEM major.
- Meet the 3,600 minimum “STEM Index” for a STEM major. (This is higher than the minimum for CSU system-wide eligibility.)

Other non-California residents must:

- Have a 3.0 GPA or greater in college preparatory subjects.
- Meet the 3,500 minimum “CSULB Index” to be considered for a non-STEM major.
- Meet the 3,600 minimum “STEM Index” for a STEM major. (This is higher than the minimum for CSU system-wide eligibility.)

Eligibility Index

$$\text{CSULB Eligibility Index} = \text{High School GPA} \times 200 + \text{HS Math GPA} \times 500 + \text{HS English GPA} \times 500$$

$$\text{CSULB STEM Eligibility Index} = \text{HS Math GPA} \times 600 + \text{HS Science GPA} \times 600$$



Scan the QR code for more [information on the Eligibility Index](#).

Students should refer to [CSULB Admissions](#) for the most current information.

A-G College Preparatory Subject Requirements

A. HISTORY & SOCIAL SCIENCE	2 years (including 1 year of U.S. history or 1 semester of U.S. history and 1 semester of civics or American government and 1 year of social science)
B. ENGLISH	4 years of college preparatory English composition and literature
C. MATH	3 years (4 years recommended including Algebra I, Geometry, Algebra II, or higher mathematics - take one each year)
D. LABORATORY SCIENCE	2 years (including 1 biological science and 1 physical science)
E. LANGUAGE OTHER THAN ENGLISH	2 years of the same language (American Sign Language is applicable. Possible waiver of this requirement available)
F. VISUAL & PERFORMING ARTS	1 year of dance, drama or theater, music, or visual art
G. COLLEGE PREPARATORY ELECTIVE	1 year (additional year chosen from the University of California “A-G” list)

Visit [CSU A-G Course List](#) for a complete list of A-G courses.

Transfer Applicants

Transfer applicants must fulfill the following eligibility requirements:

- Have a minimum, overall college GPA of 2.00 or higher in all transferable college coursework. *To be competitive, earn the highest overall GPA possible.*
- Be in good standing at the last college or university attended.

CSULB TRANSFER PATH

OR

**30 SEMESTER UNITS
GENERAL
EDUCATION &
THE GOLDEN FOUR**

Written Communication
Oral Communication
Critical Thinking
Math/Quantitative Reasoning

+

**MAJOR-SPECIFIC
REQUIREMENTS**

**ASSOCIATE DEGREE
FOR TRANSFER (ADT)**

Google [CSU ADT](#) for degree options.

= **60 MINIMUM TRANSFERABLE
SEMESTER UNITS**

FALL SEMESTER APPLICATION

Complete all requirements by the end of the prior Spring term.

SPRING SEMESTER APPLICATION

Complete all requirements by the end of the prior Summer term.



The minimum GPA requirements are the same for both in-state and out-of-state students.

For additional [Transfer Information](#), scan the QR code.

Register for a free [Transfer Admission Workshop](#).

Transferable Courses

Students with coursework from the California Community Colleges can visit [ASSIST](#) to see how those courses may transfer to CSULB and other public universities in California.

There are two pathways to be admissible to CSULB: Major-Specific Requirements and Associate Degree for Transfer Program (ADT). Review the options below for more information.

Associate Degrees for Transfer

A complete and verified ADT can be used to substitute major-specific requirements for a similar major at CSULB. The ADT also provides a 0.1 point GPA boost (only during competitive review). For a list of CSULB programs that are eligible for ADT transfer benefits, visit [Associate Degree for Transfer](#). Additional preference given for applicants who complete both the ADT and Major-Specific Requirements as well as any additional recommended preparation courses.

Major-Specific Requirements

All majors have specific admission and declaration requirements. Carefully review the information for your major as these requirements vary between majors and are updated annually. Visit [Transfer Admission Eligibility](#) to locate your transfer Major-Specific Requirements.

TUITION

CA Estimated Annual Tuition & Fees **CSULB \$6,888**

For information on tuition and fees, visit [CSULB Tuition and Fees](#).

FINANCIAL AID

FAFSA

To gain access to state and federal grants, loans, work-study and some merit-based aid, visit [FAFSA](#).

California Dream Act

Allows students who meet AB540 criteria to apply for and receive funds from certain state and institutional financial aid programs. For more information, visit [CA Dream Act](#).

Scholarships

\$12.1M

Scholarships Awarded

For scholarship information, visit [CSULB Financial Aid and Scholarships](#).

UNDERGRADUATE MAJORS & DEPARTMENTS

We offer a variety of academic programs for bachelor, master and doctoral degrees. Options in minors such as Native American Cultures, Cambodian Language & Culture (Khmer) and Queer Studies are available. Visit [Colleges & Departments](#) for a complete listing of degrees.

College of the Arts

Art

- Art Education
- Art History
- Art Photography
- Ceramics
- Drawing & Painting
- Graphic Design
- Illustration/Animation
- Printmaking
- Sculpture
- Studio Art

Dance

Design (Industrial, Interior)

Film & Electronic Arts

- Narrative Production
- Theory & Practice of Cinema

Music

Theatre Arts

College of Business

Business Administration

- Accountancy
- Finance
- Information Systems
- International Business
- Marketing

Management

- Human Resources
- Supply Chain

College of Education

Liberal Studies

Teacher Education

Educational Leadership

College of Engineering

Biomedical Engineering

Chemical Engineering

Civil Engineering

Construction Management

Computer Engineering

Computer Science

Electrical Engineering

Engineering Technology

Mechanical Engineering

Aerospace Engineering

College of Health & Human Services

Criminology & Criminal Justice

Family & Consumer Sciences

- Child Development & Family Studies

· Consumer Affairs

- Fashion Design
- Fashion Merchandising
- Food Science
- Hospitality Management
- Nutrition & Dietetics

Health Care Administration

Health Science

- Community Health Education
- School Health

Kinesiology

Public Policy & Administration

Military Science

Recreation & Leisure Studies

School of Nursing

School of Social Work

Speech-Language Pathology

College of Liberal Arts

Africana Studies

ASL Linguistics & Deaf Cultures

ASL English Interpreting

American Studies

Anthropology

Asian & Asian American Studies

Chicano & Latino Studies

Communication Studies

Comparative World Literature

Classics

Economics

English

Environmental Science & Policy

Geography

History

Human Development

International Studies

Jewish Studies

Journalism

Public Relations

Linguistics

Philosophy

Political Science

Psychology

Religious Studies

Romance, German, Russian Languages & Literature

Sociology

Women's, Gender & Sexuality Studies

College of Natural Sciences & Mathematics

Applied Statistics

Astronomy

Biological Sciences

Biochemistry

Chemistry

Geological Sciences

(Earth Science, Geology)

Mathematics

Physics

Statistics

MAJOR & CAREER EXPLORATION

If you are unsure about your major or career choice, the DREAM Career Decision-Making Model will help guide you. Visit [Career Development Center: Major & Career Exploration](#) for more information.

BEACH PLEDGE

Students may complete their baccalaureate degrees in four or two years respectively. Visit [Beach Pledge](#) for more information.

CONTACT INFORMATION

University Outreach & School Relations

csulb.edu/outreach

562.985.5358

Admissions

csulb.edu/admissions

562.985.5471

Bob Murphy Access Center

csulb.edu/bmac

562.985.5401

College of Professional & Continuing Education

cpace.csulb.edu

562.985.5561

DREAM Success Center

csulb.edu/dream

562.985.5869

Educational Opportunity Program

csulb.edu/eop

562.985.5637

Financial Aid

csulb.edu/financial-aid

562.985.5471

Housing & Residential Life

csulb.edu/housing

562.985.4187

Veterans Services

csulb.edu/veterans

562.985.5115

Information is subject to change.